

Important Security Notice to Customers – TLS 1.2 Update

To maintain the highest level of data security and to align with industry best practices, a security update will require all TrustTexas Bank customers to have current operating systems and browsers to access secure online services, including the bank’s website, online and mobile banking, and more. This upcoming security update will be **effective Monday, April 9, 2018**.

The following information is provided to help ensure uninterrupted access for you to the banking services you value, as well as to other businesses and services you access online.

About Transport Layer Security (TLS)

Transport Layer Security (TLS) is a protocol that ensures that a connection to a remote endpoint is securely encrypted in order to provide privacy and data integrity. TLS 1.2 is the most current version and is considered to be the most secure. TLS 1.0 and 1.1 are earlier, now less secure versions.

TLS Preparations

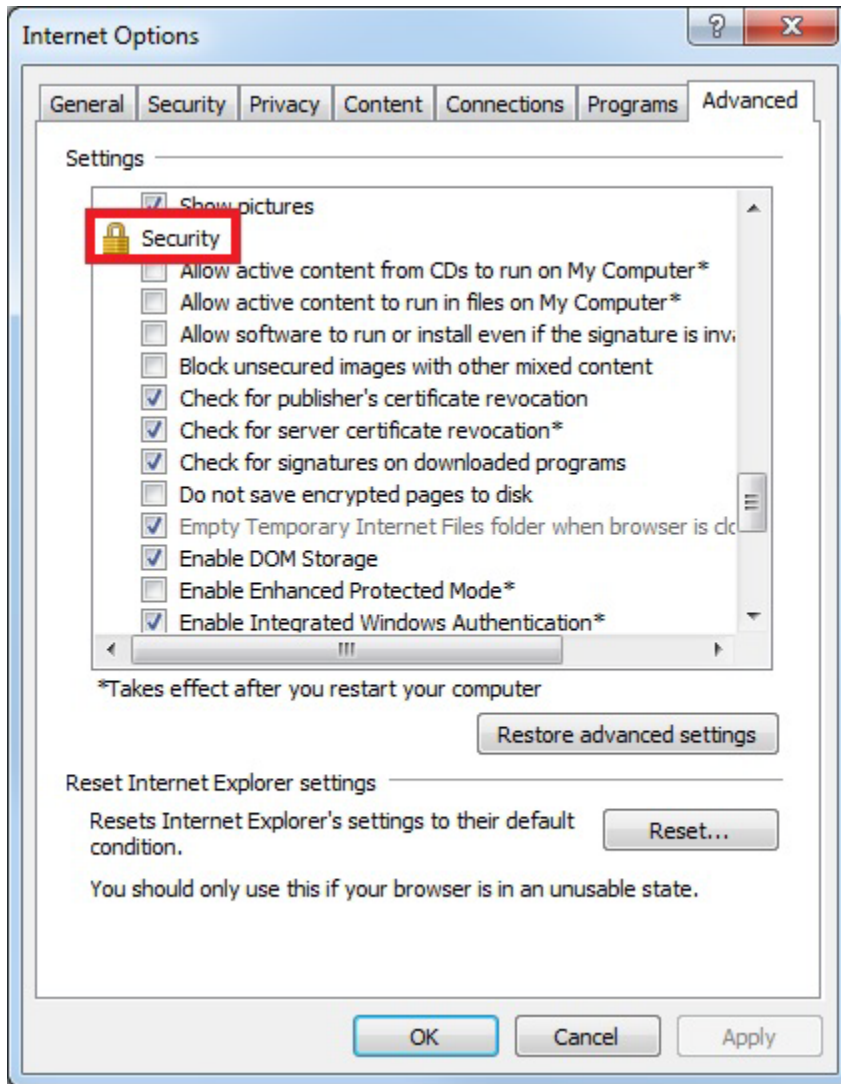
To prepare for this change, please ensure that you are using operating systems and browsers that support TLS 1.2. Below is a basic TLS 1.2 compatibility chart.

Browsers and Operating Systems	TLS 1.2 Compatibility Notes
Microsoft Edge	Compatible by default
Microsoft IE Desktop and mobile version 11	Compatible by default
Microsoft IE Desktop versions 9 and 10	Capable when run in Windows 7 or newer, but not enabled by default
Firefox 27 and higher	Compatible by default
Google Chrome 38 and higher	Compatible by default
Oracle Java version 1.7 and higher	Compatible by default
Mobile Safari versions 5 and higher	Compatible by default
Microsoft Windows Server 2008 R2 and higher	Compatible by default
Microsoft Windows Server 2008 and below	Not compatible with TLS 1.2
Microsoft Windows 7, 8.0, 8.1 and 10	Compatible by default
Microsoft XP/Vista and below	Not compatible with TLS 1.2

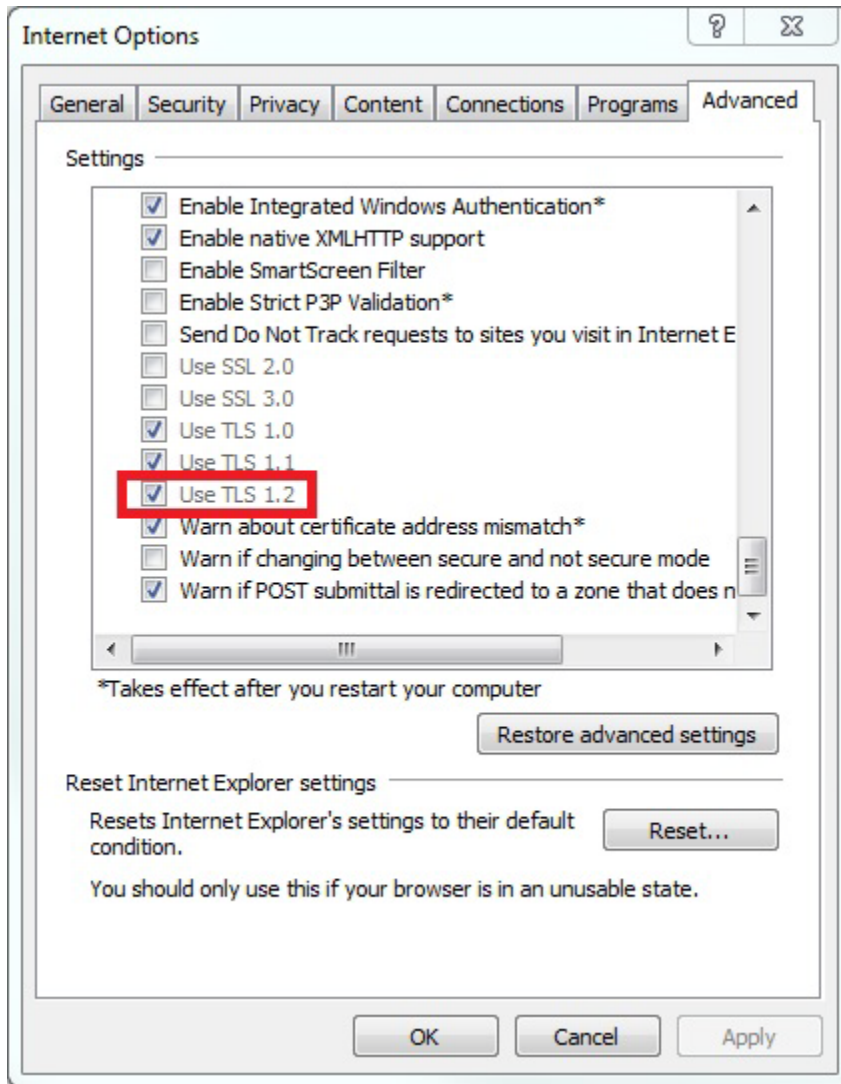
How to Enable Transport Layer Security (TLS) 1.2

1. From your internet browser, select **Tools**, then **Internet Options**.

2. Click the **Advanced Tab**, and scroll down to Security section.



3. Ensure TLS 1.2 is checked, if not check **TLS 1.2** and select, **Apply, OK**.



Important Notice to Users with Outdated Operating Systems and Browsers

We encourage you to upgrade your computer software as soon as possible. Continuing to use an operating system or browser that is no longer supported by its developer exposes you and your device to a significant number of risks and vulnerabilities, since your device no longer receives regular updates and security patches that protect you from malware. Any personal information and other data you share over the internet and store on your computer are at risk.

Not supporting TLS 1.2 prior to the disabling of TLS 1.0 and 1.1 on Monday, April 9, 2018 will result in a disruption of service. Please be sure your browser and operating systems are up-to date before this date.